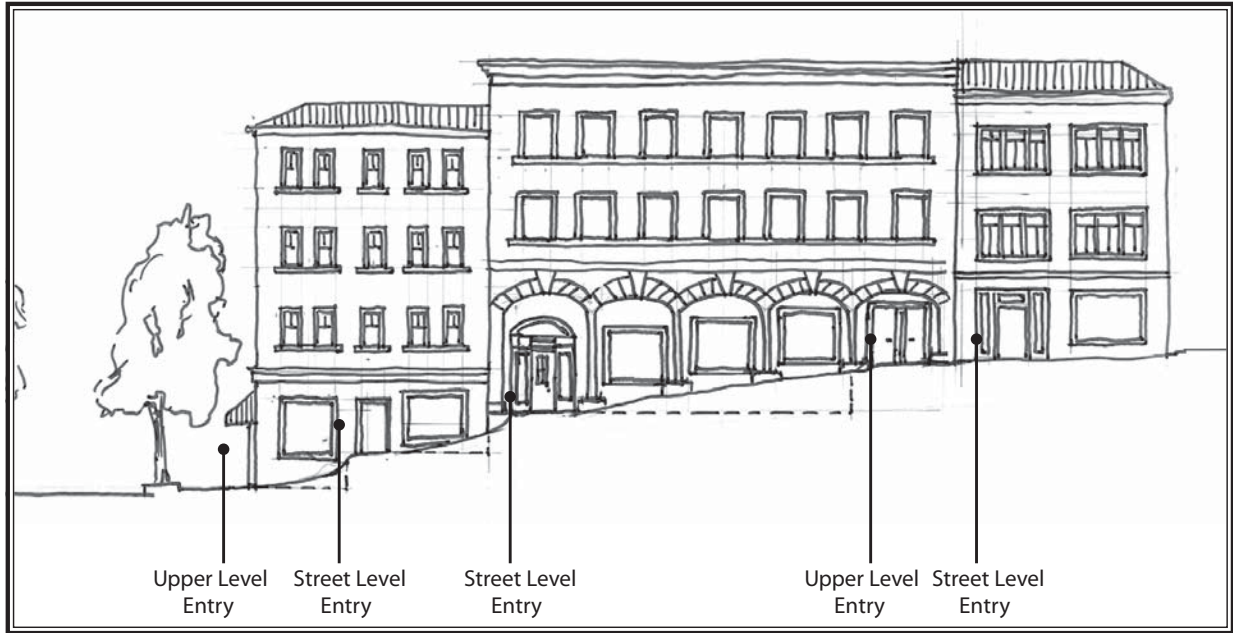


## 6.2-D: ENTRIES

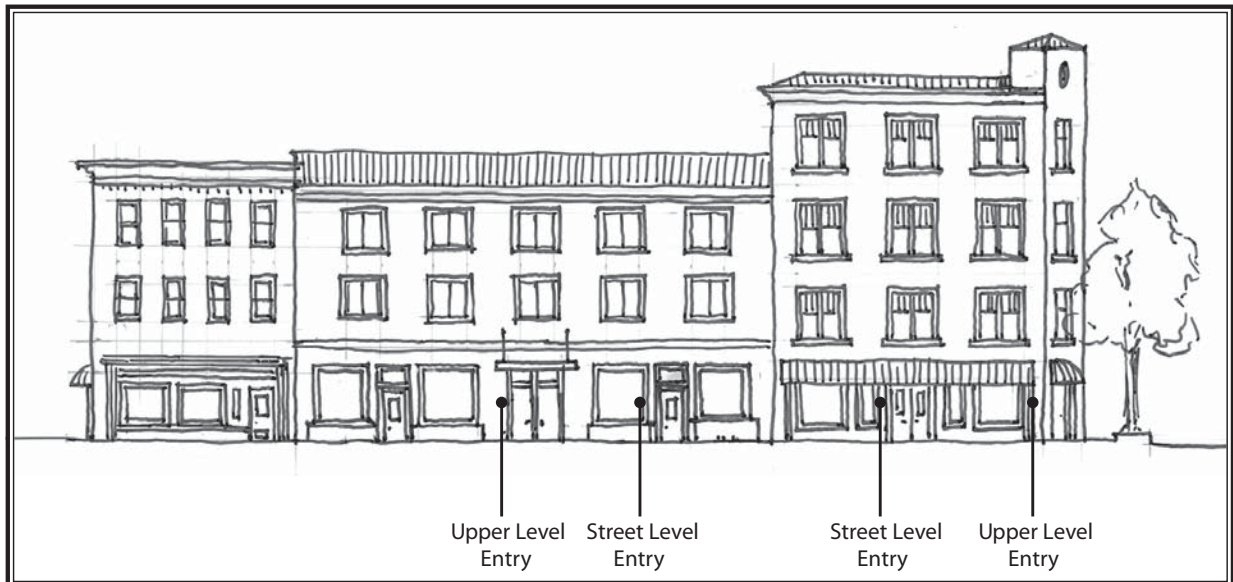
- Ground floor retail or commercial space entries should be located at the street building front.
- Service entrances should be at the rear of the buildings.
- Entrances to second and third story uses should be located along the street front

and articulated differently than the retail entrances.

- Entries along sloping streets should provide safe, flat entryways while maintaining easy access to storefronts for window shopping.
- Secondary entrances may be located at the rear and sides of buildings.
- See diagram below for graphic illustration of Entries.



Sloping Street



Level Street

### Exhibit 37 ENTRIES

## THE KNOLLS OF DOVER Town of Dover, New York

*Dover Knolls Development Company II, LLC  
Saccardi & Schiff, Inc. - Planning and Development Consultants*