

6.2-E: COMMERCIAL STOREFRONTS

- Commercial facades should be designed as traditional storefronts that provide a view of the interior space from the sidewalk. Blank walls should be avoided on all streets.

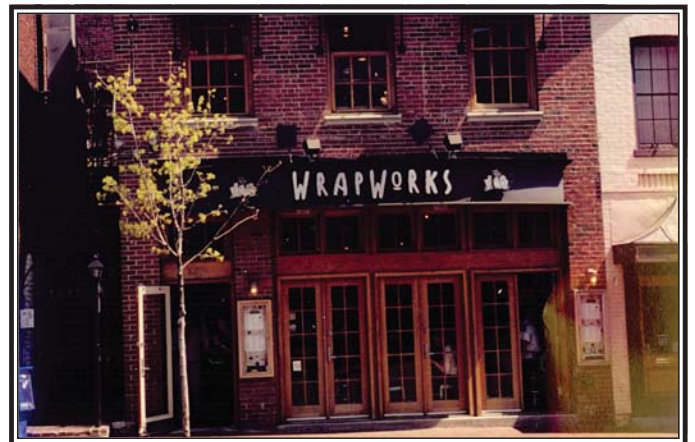


Exhibit 38 COMMERCIAL STOREFRONTS

THE KNOLLS OF DOVER Town of Dover, New York

*Dover Knolls Development Company II, LLC
Saccardi & Schiff, Inc. - Planning and Development Consultants*