

FIGURE 1A.

NOISE MONITORING LOCATIONS



**SITE LOCATION #1: WINGDALE ELEMENTARY SCHOOL
ROUTE 55, WINGDALE, NEW YORK**

**SITE LOCATION #2: DOVER PLAINS PUBLIC LIBRARY
1797 RT 22, WINGDALE, NEW YORK**

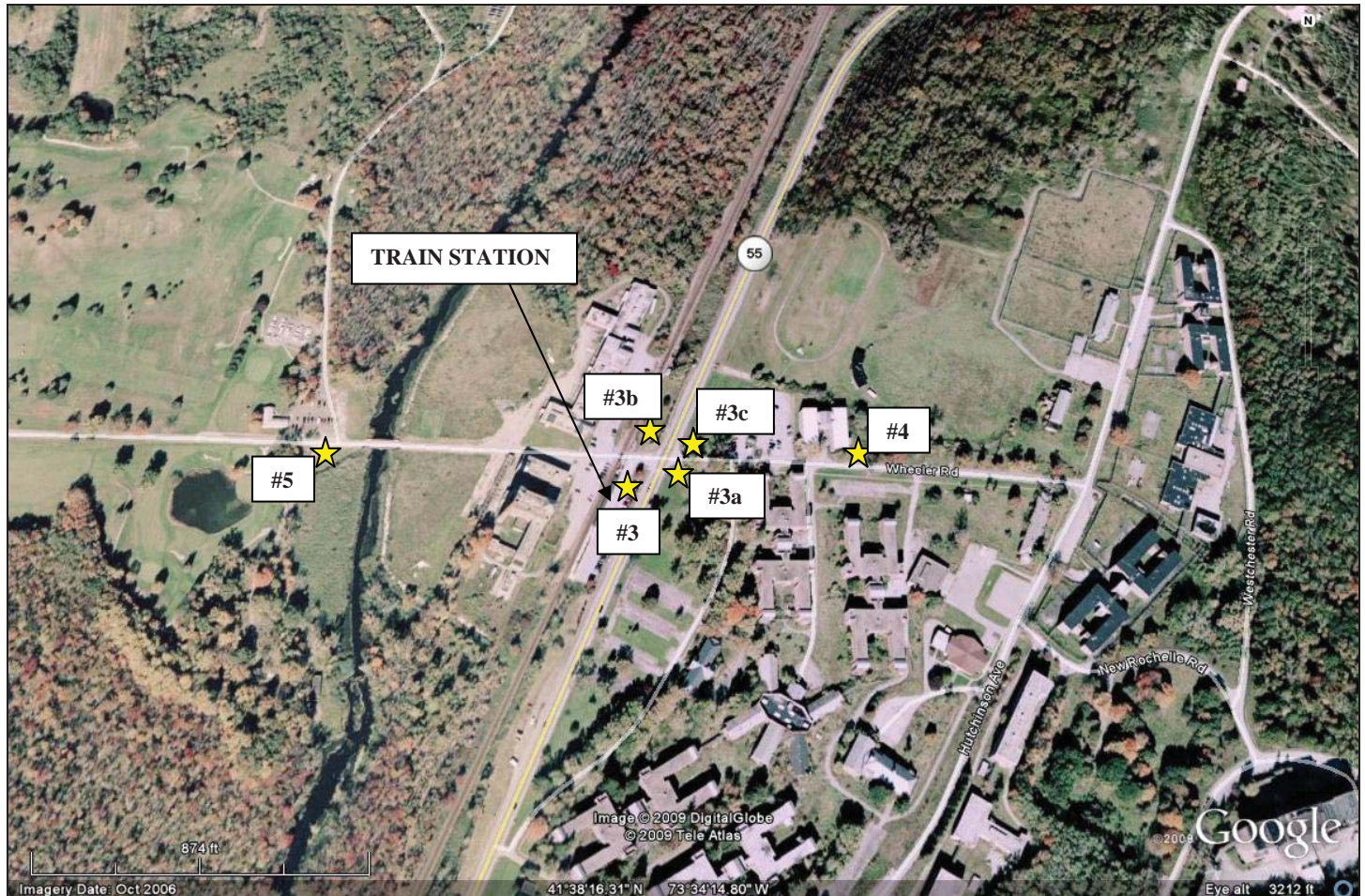
Exhibit II.L-1A
NOISE MONITORING LOCATIONS

THE KNOLLS OF DOVER
Town of Dover, New York

*Dover Knolls Development Company II, LLC
Saccardi & Schiff, Inc. - Planning and Development Consultants*

FIGURE 1B.

NOISE MONITORING LOCATIONS



SITE LOCATION #3: SW DEVELOPMENT CORNER (RT 55/22)

SITE LOCATION #3a: SE DEVELOPMENT CORNER (RT 55/22)

SITE LOCATION #3b: NW DEVELOPMENT CORNER (RT 55/22)

SITE LOCATION #3c: NE DEVELOPMENT CORNER (RT 55/22)

SITE LOCATION #4: PSYCH FACILITY - EAST DEVELOPMENT AREA

SITE LOCATION #5: GOLF COURSE ENTRANCE - WHEELER ROAD

Exhibit II.L-1B

NOISE MONITORING LOCATIONS

THE KNOLLS OF DOVER

Town of Dover, New York

FIGURE 1C.

NOISE MONITORING LOCATIONS



SITE LOCATION #6: SOUTHERN RESIDENTIAL RECEPTOR (RT 22/55)

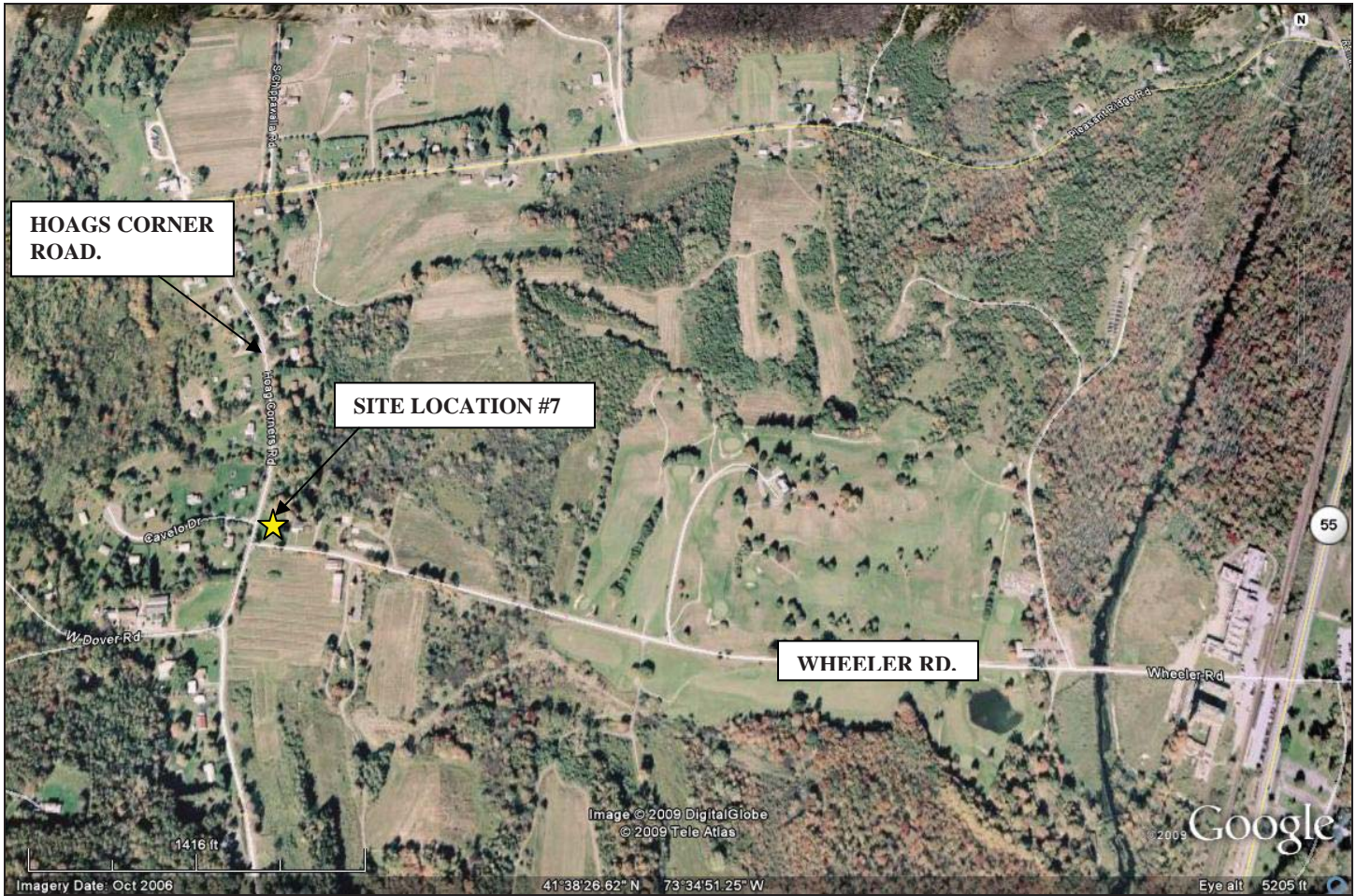
Exhibit II.L-1C
NOISE MONITORING LOCATIONS

THE KNOLLS OF DOVER
Town of Dover, New York

Dover Knolls Development Company II, LLC
Saccardi & Schiff, Inc. - Planning and Development Consultants

FIGURE 1D.

NOISE MONITORING LOCATIONS



SITE LOCATION #7: HOAGS CORNER ROAD & WHEELER ROAD

Exhibit II.L-1D
NOISE MONITORING LOCATIONS
THE KNOLLS OF DOVER
Town of Dover, New York

*Dover Knolls Development Company II, LLC
Saccardi & Schiff, Inc. - Planning and Development Consultants*